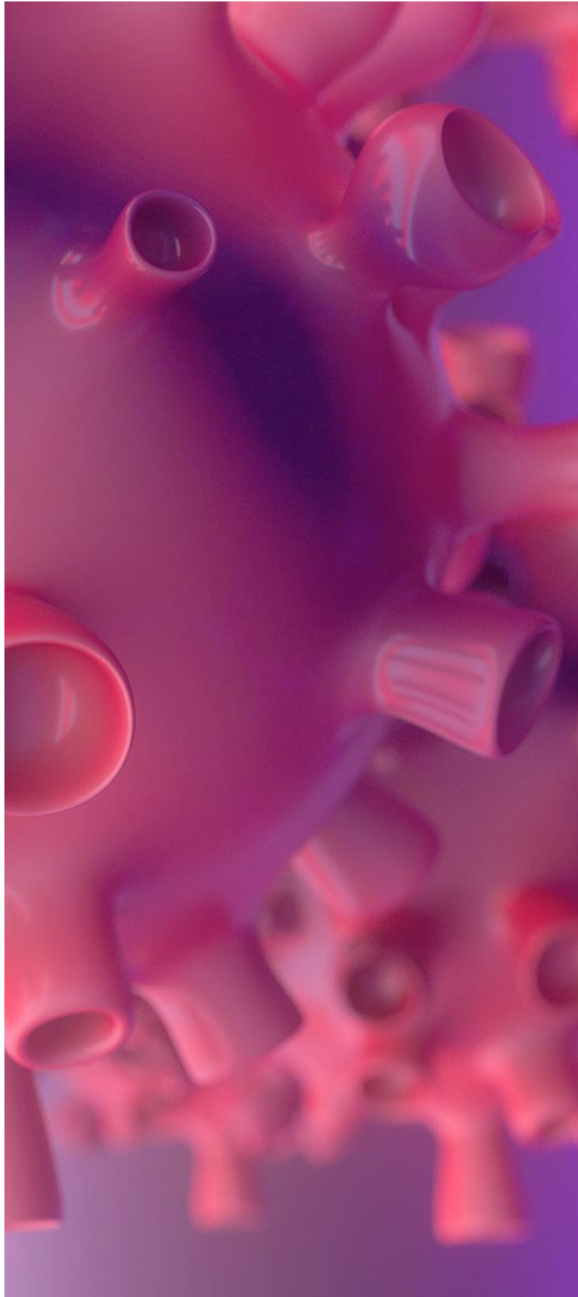




COVID-19 (No 45)

Legal Flash | Portugal

Updated April 20, 2021



International travel to and from Portugal:

- **Restrictions on land travel**
- **Restrictions on air travel**



International travel to and from Portugal

I. Evolution of epidemiological situation in Portugal in 2021

In Portugal, the third wave of COVID-19 started at the beginning of January 2021, reaching its peak at the end of that month.

The Portuguese Government has been forced to tighten the restrictive measures that have been in place, namely by reintroducing heavy restrictions on travel between Portugal and abroad.

The measures adopted since January 15 have taken effect and, since mid-February, Portugal's epidemiological situation began to improve, with a sustained drop in the number of new cases, hospitalizations and deaths from COVID-19.

As a result, from March 15, measures began to be adopted for gradual deconfinement, based on a schedule with several 15-day phases, allowing for a systematic evaluation to be made of the impacts of the measures on the pandemic's evolution and, where necessary, for any adjustments to be made.

On April 19, as the situation generally continued to improve in the country, phase three of the deconfinement began in a large part of mainland Portugal (except for 10 municipalities, where the epidemiological situation required more restrictive measures to be maintained or reintroduced).

II. Summary of rules on travel to and from Portugal from January 2021

In the rest of the world, disparate situations are seen regarding the evolving epidemiological situation, with some countries seeing improvements, but with several European and non-European countries now facing a third wave of the pandemic.

These circumstances are reflected in the periodic adjustments the Portuguese Government is making to the rules that apply to travel between Portugal and abroad, whether by air or by land.

- On January 31, 2021, (i) internal border controls in Portugal were reimposed; (ii) travel by Portuguese citizens outside mainland Portugal by any means, including road, rail, air, river, and sea, was prohibited, except for travel considered essential; and (iii) conditions on air travel were made stricter. To avoid the spread of the British and Brazilian variants of the virus, flights were suspended between Portugal and the United Kingdom (from January 23) and between Portugal and Brazil (from January 29).
- In phase one of the deconfinement, which was between March 15 and 31, the prohibition on travel by Portuguese citizens outside mainland Portugal was lifted, but the remaining restrictions, both regarding travel by plane and travel between Portugal and Spain by land, remained unchanged.
- In mid-March, Portugal saw its first cases of the South African variant of the virus. Meanwhile, the epidemiological situation was worsening throughout European and non-European



countries. Consequently, on March 20, restrictions were placed on flights departing from South Africa and, from April 1, new restrictions were placed on air travel and on entry into Portugal by land for citizens from certain countries.

- On April 19, the start of phase three of deconfinement, new adjustments were made to the rules on travel from and to mainland Portugal. Several significant changes are seen in this period, including the end of the suspension of flights between Portugal and Brazil and between Portugal and the United Kingdom. For travel by land between Portugal and Spain, entry (but not exit) is now admitted for essential travel, such as for professional reasons, study, family reunion, health, and humanitarian reasons.

We describe the regime in place between April 19 and 30, 2021, below.

III. Restrictions on land travel between April 19 and 30

Decree 3-D/2021 of January 29 reintroduced, as an exceptional and temporary measure, Portugal's internal border controls for people, to restrict traffic by land between Portugal and Spain.

Since January 31, 2021, the following restrictions have been in place:

- **Road traffic** at internal land borders has been prohibited, regardless of the type of vehicle, except for the international carriage of goods, the transport of crossborder workers, and the movement of emergency and rescue vehicles and emergency services.
- **Rail traffic** between Portugal and Spain has been suspended, except for transporting goods.
- **River transport** between Portugal and Spain has been suspended.

These limitations do not affect (i) the right of entry of Portuguese citizens and those authorized to reside in Portugal, (ii) the right of exit of citizens residing in another country, and (iii) from April 19, the right of entry for essential travel, specifically for professional reasons, study, family reunion, or for health or humanitarian reasons.

These measures have been successively extended, and they are currently in place until April 30, 2021, in accordance with Decree 7/2021 of April 17.

Crossborder travel, where permitted, can only take place at certain land border crossing points, defined by ministerial order. Currently, under Order 3838-B/2021 of April 15, these points are the following:

- Every day, without interruption: Valença-Viana do Castelo, Vila Verde da Raia-Chaves, Quintanilha-Bragança, Vilar Formoso-Guarda, Caia-Elvas, Vila Verde de Ficalho-Beja, and Castro Marim-Praça da Fronteira
- Weekdays between 6 a.m. and 8 p.m.: Marvão-Portalegre
- Weekdays between 6 a.m. and 9 a.m. and between 5 p.m. and 8 p.m.: Monção, Melgaço, Ponte da Barca, Montalegre, and Vinhais



- > Weekdays between 7 a.m. and 9 a.m. and between 5 p.m. and 7 p.m.: Miranda do Douro, Termas de Monfortinho-Castelo Branco, Mourão, and Barrancos
- > Wednesdays and Saturdays only, between 10 a.m. and 12 p.m.: Rio de Onor

This measure will remain in force until 11:59 p.m., April 30, 2021.

Because of the worsening epidemiological situation observed from mid-March in several European and non-European countries, from April 1, 2021, it became compulsory for citizens entering mainland Portugal by land, and coming from certain countries (to be defined by ministerial order), to spend 14 days in preventive isolation, at home or at a place indicated by the health authorities, after entry into Portugal.

Currently, under Order 3838-B/2021 of February 15, those countries are: Bulgaria, Czech Republic, Cyprus, Croatia, Slovenia, Estonia, France, Hungary, Netherlands, Poland, Sweden, as well as Brazil and South Africa (considering citizens that left South Africa in at least the last 14 days as coming from that country).

IV. Restrictions on air traffic to and from Portugal between April 19 and 30

Also, from January 31, 2021, air travel to and from Portugal was subject to stricter conditions, based on the epidemiological situation in the countries of origin of the flights, assessed using the prevalence rate of COVID-19 cases observed in the last 14 days.

Due to the worsening epidemiological situation in several European and non-European countries in recent weeks, from April 1, 2021, the conditions for entry into mainland Portugal of passengers coming from those countries have been tightened. These include the requirement to spend 14 days in preventive isolation after arriving in Portugal or restricting travel to only essential travel.

In any case, even for flights not departing from countries with worrying epidemiological situations, proof of having conducted a COVID-19 test, with a negative result, performed 72 hours before departure, is always required.

Also, from April 16, the suspension of flights between Portugal and the United Kingdom, which was in force from January 23, and between Portugal and Brazil, which was in force from January 29, ended.

Origin of flights (countries included between 16.04.2021 and 30.04.2021)	Restrictions	Conditions
South Africa,* Brazil,* Bulgaria, Czech Republic, Cyprus, Croatia, Slovenia, Estonia, France, Hungary, Netherlands, Poland, Sweden	Only essential travel allowed**	1. Negative result of RT-PCR test performed within 72 hours of departure*** 2. Preventive isolation for 14 days on arrival****



Germany, Austria, Belgium, Denmark, Slovakia, Spain, Greece, Italy, Latvia, Lithuania, Luxembourg, Norway, Romania, Switzerland	Only essential travel allowed**	Negative result of RT-PCR test performed within 72 hours of departure***
Finland, Ireland, Iceland, Liechtenstein, Malta	No restrictions	Negative result of RT-PCR test performed within 72 hours of departure***
Australia, China, New Zealand, Rwanda, Singapore, South Korea, Thailand, Hong Kong and Macau	No restrictions	Negative result of RT-PCR test performed within 72 hours of departure***
Other countries	Only essential travel allowed**	Negative result of RT-PCR test performed within 72 hours of departure***
Special flights	1. Humanitarian flights 2. Flights to help foreigners in mainland Portugal return to their countries	Negative result of RT-PCR test performed within 72 hours of departure***

* The requirement of preventive isolation is also applicable to passengers on flights initially departing from South Africa and Brazil who have stopped or transited in other airports, and to passengers of flights, regardless of origin, holding passports recording a departure from South Africa and Brazil within 14 days before their arrival in Portugal.

** Movement or entry into or departure from Portugal by citizens for professional, educational, family, health or humanitarian reasons, is considered essential travel.

*** Excluding children aged under two.

**** Exempt from the requirement of preventive isolation, requiring to limit their travel to what is essential to the purpose of their entry into Portuguese territory, are passengers who are traveling (i) for essential reasons, staying in Portuguese territory, as attested by a return ticket, for no more than 48 hours, (ii) for essential reasons as part of events organized by the Portuguese Presidency of the European Council, regardless of the length of stay, or (iii) traveling solely to participate in international professional sports competitions to be conducted in Portugal, identified in a ministerial order.

If a COVID-19 test is required under the above terms, passengers may only board a flight if they can provide proof that they have had a test and received a negative result.

Portuguese nationals, foreign nationals legally residing in mainland Portugal, and diplomats accredited in Portugal who board a flight without a negative COVID-19 test, despite being required to have one, will be referred to the competent authorities on arrival in Portugal to have a test at their own expense, and they must wait at a specific place inside the airport to receive a negative test result. Refusing to have a test will be considered an administrative offense, punishable by a fine ranging from EUR 600 to EUR 1,600 during the state of emergency.

Third-country nationals who are not resident in Portugal who board a flight without a COVID-19 test will be refused entry to Portugal.



Airlines that allow Portuguese nationals or foreign citizens to board a flight without a negative COVID-19 test result will be subject to administrative proceedings and may be fined between EUR 1,000 and EUR 4,000 for each passenger without a test during the state of emergency.

These measures do not apply to state and armed forces aircrafts, rural fire fighting aircrafts, freight- and mail-only flights, humanitarian and medical emergency flights, and technical stopovers for non-commercial purposes.

All passengers arriving in mainland Portugal at an international airport managed by ANA, S.A. will have to pass through an infrared body temperature scanner. Passengers found with a temperature of or greater than 38°C must be directed to a space equipped to measure body temperature. If the situation justifies it, these passengers are required to take a COVID-19 test, and they must await the result in the same location inside the airport.



Contact

Cuatrecasas, Gonçalves Pereira & Associados,
Sociedade de Advogados, SP, RL
Sociedade profissional de responsabilidade limitada

Lisbon

Avenida Fontes Pereira de Melo, 6 I 1050-121 Lisboa, Portugal
Tel. (351) 21 355 3800 I Fax (351) 21 353 2362
cuatrecasasportugal@cuatrecasas.com I www.cuatrecasas.com

Oporto

Avenida da Boavista, 3265 - 5.1 I 4100-137 Porto I Portugal
Tel. (351) 22 616 6920 I Fax (351) 22 616 6949
cuatrecasasporto@cuatrecasas.com I www.cuatrecasas.com

Cuatrecasas has set up a Coronavirus Task Force, a multidisciplinary team that constantly analyses the situation emerging from the COVID-19 pandemic. For additional information, please contact our Task Force by email TFcoronavirusPT@cuatrecasas.com or through your usual contact at Cuatrecasas. You can read our publications or attend our webinars on our [website](#).

© Cuatrecasas, Gonçalves Pereira & Associados, Sociedade de Advogados, SP, RL 2021.

The total or partial reproduction is forbidden. All rights reserved. This communication is a selection of the news and legislation considered to be relevant on reference topics and it is not intended to be an exhaustive compilation of all the news of the reporting period. The information contained on this page does not constitute legal advice in any field of our professional activity.

Information about the processing of your personal data

Data Controller: Cuatrecasas, Gonçalves Pereira & Associados, Sociedade de Advogados, SP, RL (“Cuatrecasas Portugal”).

Purposes: management of the use of the website, of the applications and/or of your relationship with Cuatrecasas Portugal, including the sending of information on legislative news and events promoted by Cuatrecasas Portugal.

Legitimacy: the legitimate interest of Cuatrecasas Portugal and/or, where applicable, the consent of the data subject.

Recipients: third parties to whom Cuatrecasas Portugal is contractually or legally obliged to communicate data, as well as to companies in its group.

Rights: access, rectify, erase, oppose, request the portability of your data and/or restrict its processing, as described in the additional information.

For more detailed information on how we process your data, please go to our [data protection policy](#).

If you have any questions about how we process your data, or if you do not wish to continue receiving communications from Cuatrecasas Portugal, please send a message to the following email address data.protection.officer@cuatrecasas.com.